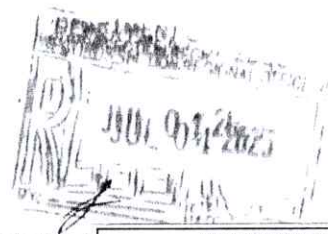


Republic of the Philippines  
Department of Education  
REGION III-CENTRAL LUZON



Advisory No. 018, s. 2025  
July 3, 2025

In compliance with DepEd Order (DO) No. 8, s. 2013  
this advisory is issued not for endorsement per DO 28, s. 2  
but only for the information of DepEd officials,  
personnel/staff, as well as the concerned public.  
(Visit [region3.deped.gov.ph](http://region3.deped.gov.ph))

Republic of the Philippines  
DEPARTMENT OF EDUCATION  
Schools Division Office of Bulacan  
**ADVISORY**  
No. 01, s. 2026

To: ☐ PUBLIC ☐ PRIVATE ☐ PSDS  
☐ ELEMENTARY ☐ JUNIOR HIGH SCHOOL ☐ SENIOR HIGH SCHOOL  
☐ ELEMENTARY SCHOOL PRINCIPALS / SCHOOL HEADS  
☐ SECONDARY SCHOOL PRINCIPALS / SCHOOL HEADS

For information:  
CECILIA E. [Signature], MA, PhD  
Assistant Schools Division Superintendent  
Office of the Schools Division Superintendent

**INVITATION TO PARTICIPATE IN THE LEARNING THROUGH EXPERIENCE  
(LTE) PROGRAM**

The LTE Team invites learners to join the **Learning Thru Experience (LTE)** program, a school-based series of interactive and engaging educational activities designed to support the K to 12 curriculum. The program provides learners with opportunities to explore real-world applications of science **within the safety of the school campus**, with flexibility to accommodate different grade levels or academic strands.

Participation by learners and school personnel is entirely voluntary and will not interfere with instructional time. This adheres to the provisions of DepEd Order (DO) No. 015, s. 2025, titled *Multi-Year Implementing Guidelines on the School Calendar and Activities*, and DO No. 009, s. 2005, titled *Instituting Measures to Increase Engaged Time-on-Task and Ensuring Compliance Therewith*.

Please refer to the attached invitation letter for additional details.

For further inquiries, please contact:

**MR. MATT C. BUMANLAG**

Contact Number: +63 931 057 2360

Email: [mateo21travelandtours@gmail.com](mailto:mateo21travelandtours@gmail.com)



**RONNIE S. MALLARI, PhD, CESO V**  
Regional Director

CLMD1/chmd2  
July 3, 2025

To send feedback  
regarding any of  
our services,  
kindly scan the  
QR Code



Address: Matalino St. D.M. Government Center, Maimpis,  
City of San Fernando (P)

Telephone Number: (045) 598-8580 to 89

Email Address: [region3@deped.gov.ph](mailto:region3@deped.gov.ph)

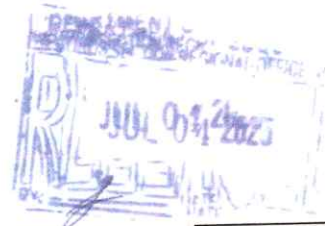
Website: <https://region3.deped.gov.ph/>



DepEd - SDO of Bulacan  
**ORIGINAL COPY RECEIVED**

DATE and TIME: \_\_\_\_\_  
FULL NAME: \_\_\_\_\_

Republic of the Philippines  
Department of Education  
REGION III-CENTRAL LUZON



Advisory No. 018, s. 2025  
July 3, 2025

In compliance with DepEd Order (DO) No. 8, s. 2013  
this advisory is issued not for endorsement per DO 28, s. 2001,  
but only for the information of DepEd officials,  
personnel/staff, as well as the concerned public.  
(Visit [region3.deped.gov.ph](http://region3.deped.gov.ph))

Republic of the Philippines  
DEPARTMENT OF EDUCATION  
Schools Division Office of Bulacan  
**ADVISORY**  
No. 01, s. 2025

To: ☐ PUBLIC ☐ PRIVATE ☐ PSDS  
☐ ELEMENTARY ☐ JUNIOR HIGH SCHOOL ☐ SENIOR HIGH SCHOOL  
☐ ELEMENTARY SCHOOL PRINCIPALS / SCHOOL HEADS  
☐ SECONDARY SCHOOL PRINCIPALS / SCHOOL HEADS

For information: CECILIA E. VALDERAMA, PhD  
Assistant Schools Division Superintendent  
Office of the Schools Division Superintendent

**INVITATION TO PARTICIPATE IN THE LEARNING THROUGH EXPERIENCE  
(LTE) PROGRAM**

The LTE Team invites learners to join the **Learning Thru Experience (LTE)** program, a school-based series of interactive and engaging educational activities designed to support the K to 12 curriculum. The program provides learners with opportunities to explore real-world applications of science **within the safety of the school campus**, with flexibility to accommodate different grade levels or academic strands.

Participation by learners and school personnel is entirely voluntary and will not interfere with instructional time. This adheres to the provisions of DepEd Order (DO) No. 015, s. 2025, titled *Multi-Year Implementing Guidelines on the School Calendar and Activities*, and DO No. 009, s. 2005, titled *Instituting Measures to Increase Engaged Time-on-Task and Ensuring Compliance Therewith*.

Please refer to the attached invitation letter for additional details.

For further inquiries, please contact:

**MR. MATT C. BUMANLAG**  
Contact Number: +63 931 057 2360  
Email: [mateo21travelandtours@gmail.com](mailto:mateo21travelandtours@gmail.com)

**RONNIE S. MALLARI, PhD, CESO V**  
Regional Director

CLM/D1/clmd2  
July 3, 2025

To send feedback  
regarding any of  
our services,  
kindly scan the  
QR Code



Address: Matalino St. D.M. Government Center, Maimpis,  
City of San Fernando (P)  
Telephone Number: (045) 598-8580 to 89  
Email Address: [region3@deped.gov.ph](mailto:region3@deped.gov.ph)  
Website: <http://region3.deped.gov.ph/>



DepEd - SDO of Bulacan  
**ORIGINAL COPY RECEIVED**

FULL NAME  
DATE and TIME: 11/9/24



Jan. 09, 2026

DepEd - SDO of Bulacan Office of the SDS

RECEIVED  
JAN 09 2026  
By: [Signature]  
Time:           

To: CECILIA E. VALDERAMA, PhD, CESO VI  
OIC – School Division Superintendent  
Division of Bulacan

DepEd - SDO of Bulacan  
RECEIVED  
JAN 09 2026  
BY: [Signature] 853

Dear Madam Valderama,

Greetings!

We, the LTE Team is dedicated to give quality educational activities in line with the Department of Education K-12 Program that aims to produce prolific, responsible and competent citizens with skills for both lifelong learning and employment. Our program, "Learning Thru Experience or LTE" gives students an exciting way to explore the world of science inside the safety of the school campus. Our lectures and activities are highly flexible depending on the grade level or academic strand of the students. Primary topics are as follows:

**Jungle Survival** (30 Minutes)

This lecture and demonstration, teach students the basic "know-how" when it comes to survival.

**Interactive Tech Manipulatives** (30 Minutes)

An interactive and engaging showcase of technology that helps students understand the basic concepts of science.

**Live Exotic Animal Encounter** (30 Minutes)

This encounter with our amazing animals will help break the stigma of keeping only conventional pets and that all exotic animals are to be feared. It will also give the students deeper understanding of each specie diverse.

It is our company's goal to bring closer to community where students, kids and entire family can have an enriching educational experience through this Learning Thru Experience (LTE).

Should you have any inquiries please feel free to contact this number 0931-057-2360.

Thank you and God Bless Always.

Sincerely,

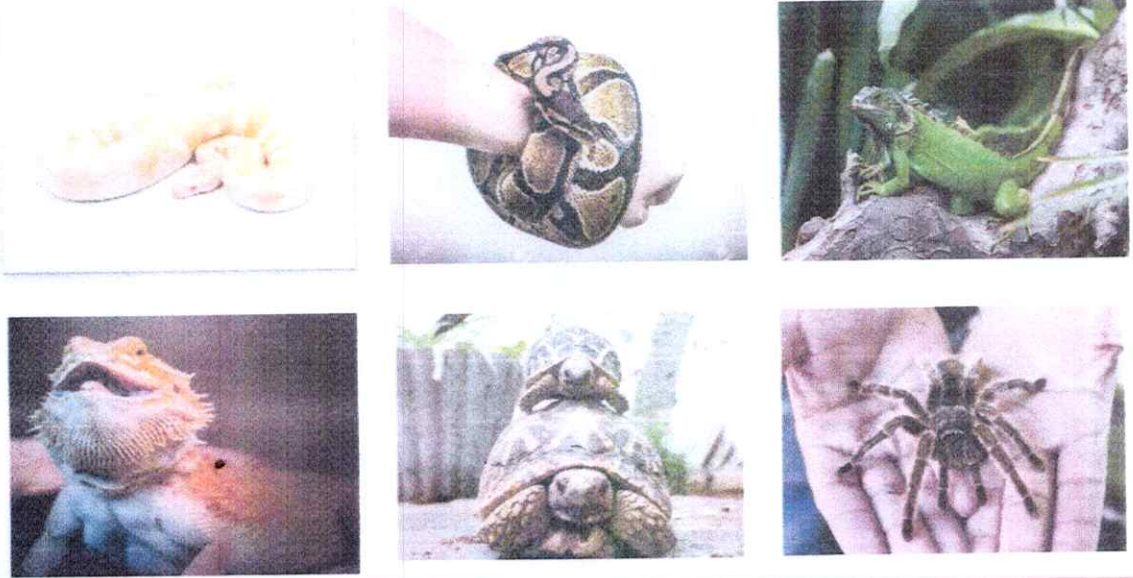
MATT C. BUMANLAG  
LTE Head





Enjoy the fun and learning of our educational exhibit!!!

Live Exotic Animal Encounter



Jungle Survival Demo



Interactive Tech Manipulative

